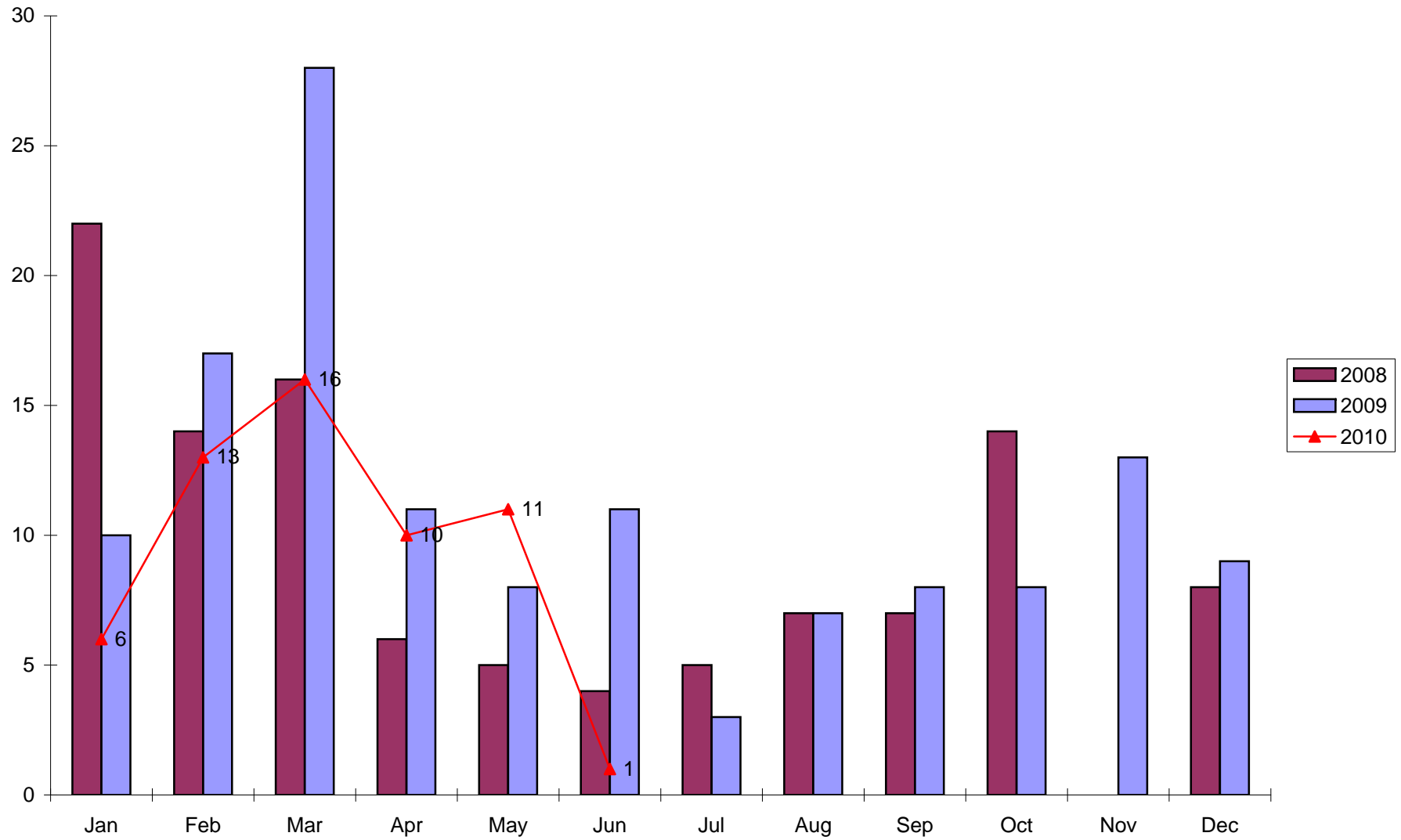
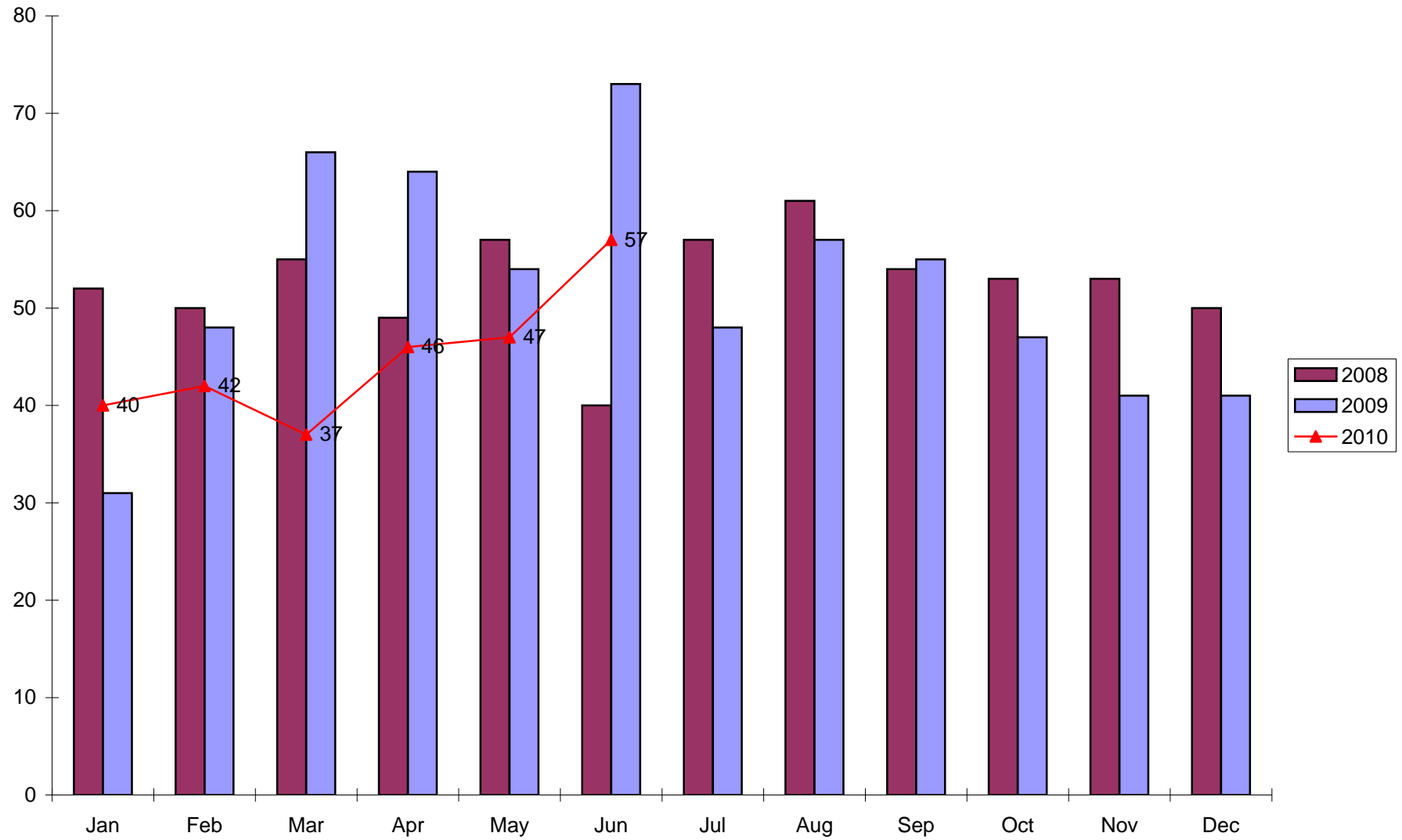


June 2010					
Organizational Results					
Measure	Exceeded Target		On Target	Caution - Below Target	Risk - Below Target
	Actual	Goal	% of Goal	Trend	Comment
Acute Days	1	11	9%	↓	After some improvement in May acute days dropped to extremely low point in June. Will discuss with providers
Outpatient Admissions	255	339	75%	↓	Outpatient encounters improved somewhat over prior month but remain below goal for the year. Developing Health Home implementation plan.
Clinic Admissions	424	442	96%	↑	
ER Admissions	57	73	78%	↓	ER volumes for month are significantly short of goal. Prior year volume was exceptionally high. Expect this to level off in coming months.
Observation	4	3	133%	↔	
Physical Therapy Units	427	332	129%	↑	
Long Term Care % Census	88.8	93.1	95%	↑	
Healthcare Results					
Direct Care Staffing Ratio	3.5	3	118%	↔	Measures direct care hours per patient day
Falls Per Month	7	5	140%	↑	Continue to show improvement although we did lose some ground a little over the prior month.
Falls Per 1000 Patient Days	6.41	4.8	134%	↑	This number remains higher than desirable mostly due to one resident identified as at greater risk.
Prevalence of Falls	16.5%	13.1%	126%	↑	This number remains higher than desirable mostly due to one resident identified as at greater risk.
Patient / Customer Results					
Financial Results					
Days in Acct Receivable	51.44	60	114%	↓	Big celebration as we hit our goal to have AR days under 60. Congratulations to the entire team!
Net Margin	14.6%	3.7%	395%	↑	Charge master improvements are having a positive net effect on the bottom line. Will continue to monitor utilization.
FTE	90.24	85	106%	↔	Training new NAC Staff created additional hours
Over Time	2.55	3	85%	↓	
Staff Results					
12 Month Average Turnover	33.3%	30%	111%	↓	Continue to show nice improvement
12 Ave Incidents	2.5	2.0	125%	↓	Continue to show nice improvement
Governance Results					

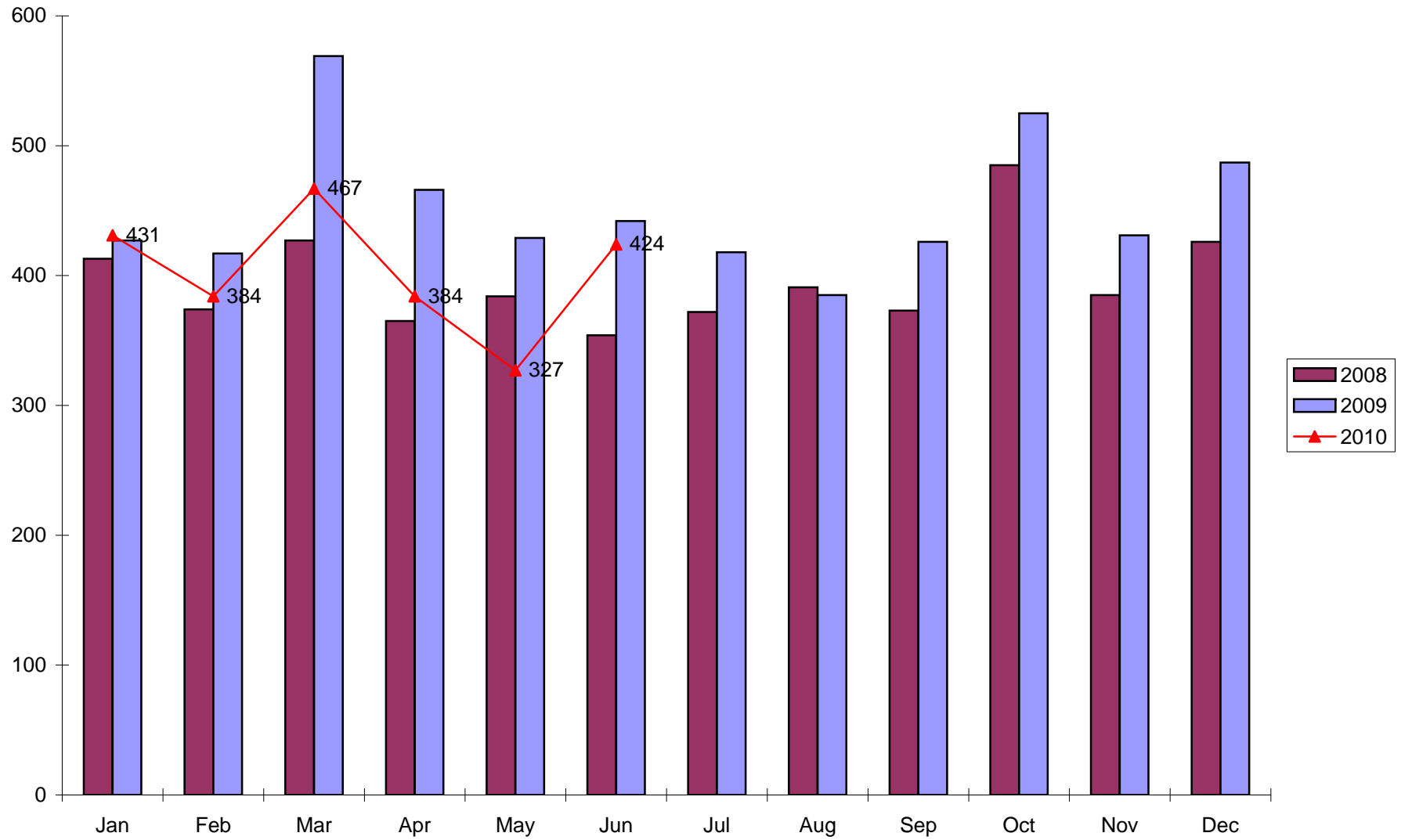
Acute Days



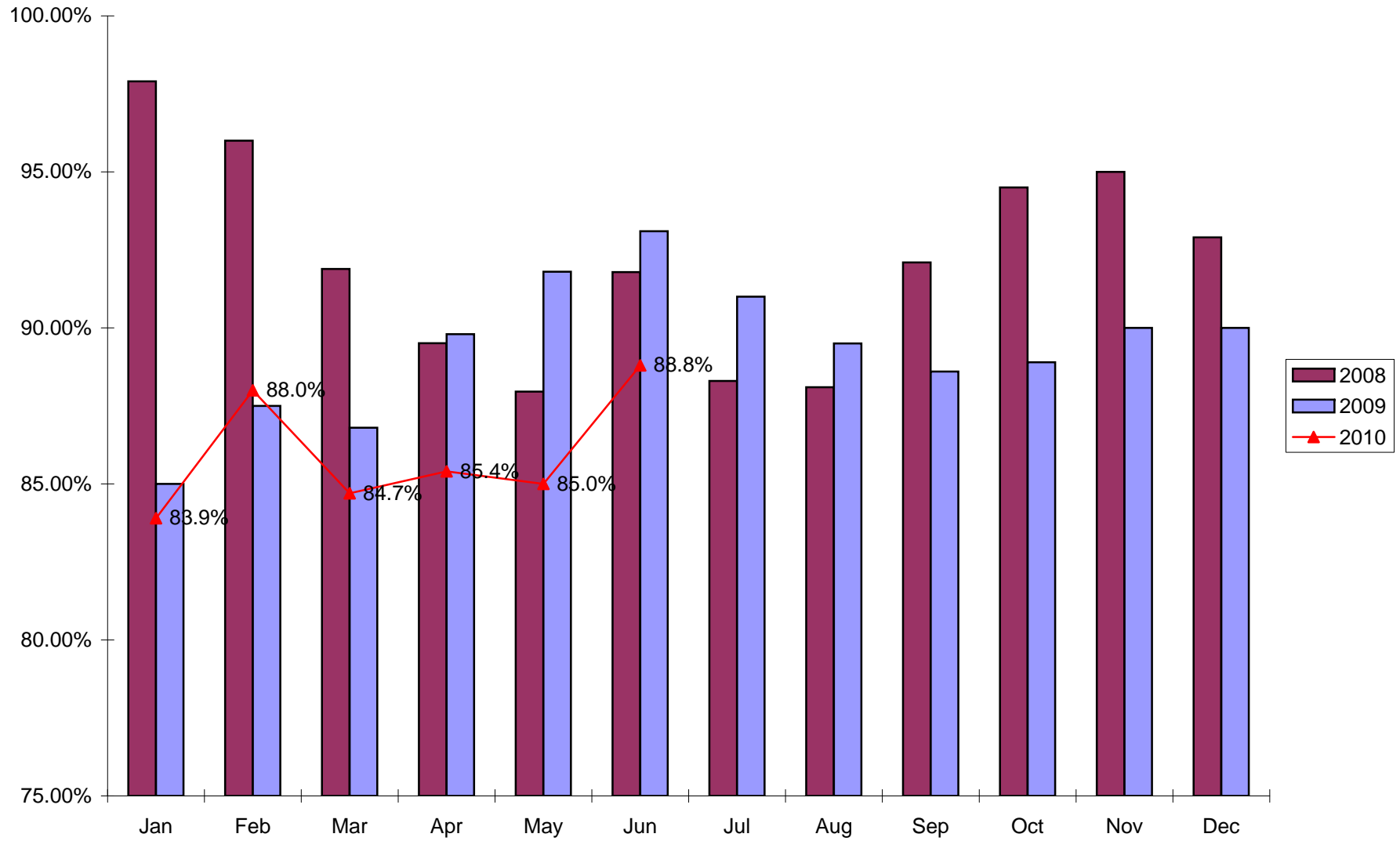
ER Encounters



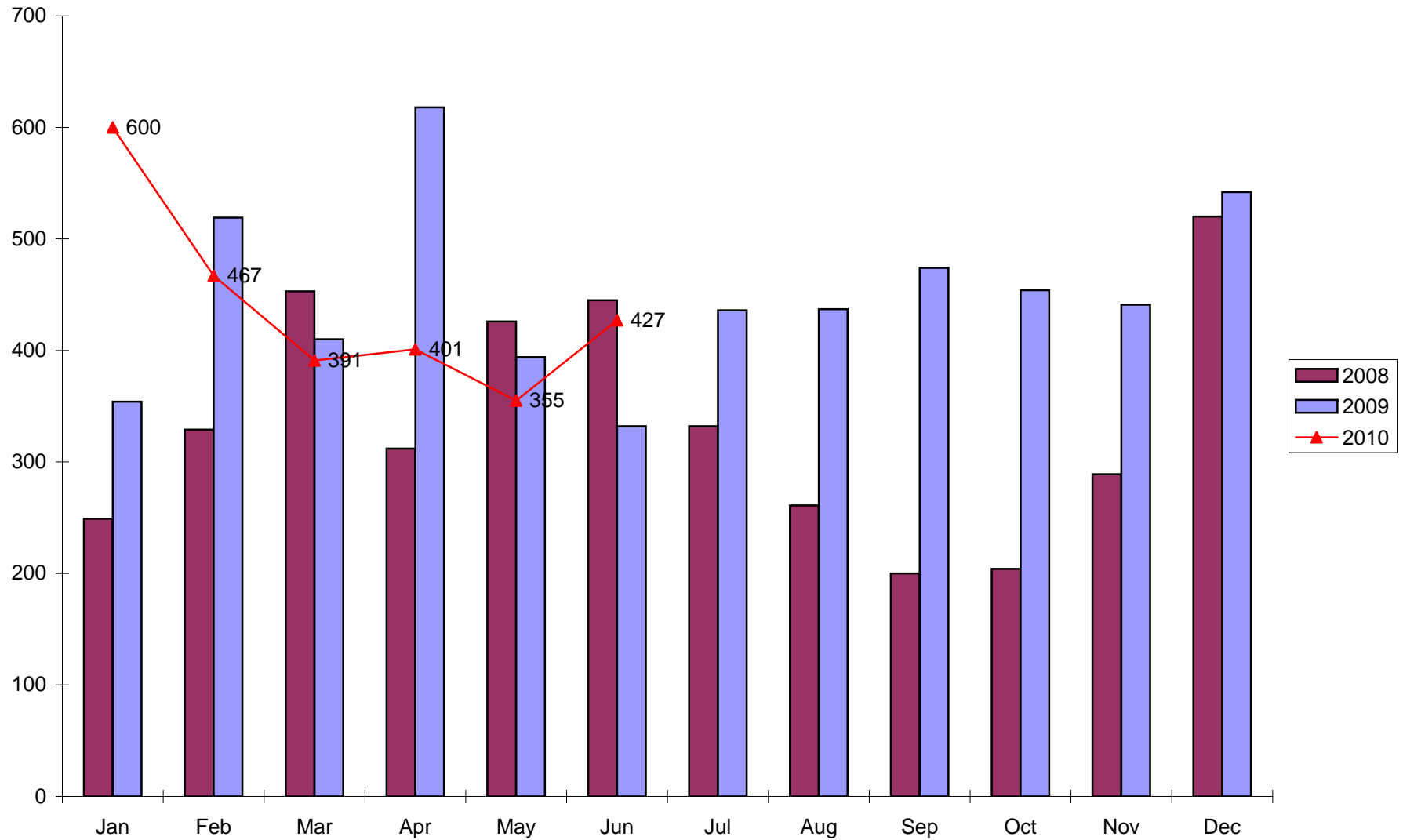
Clinic Visits



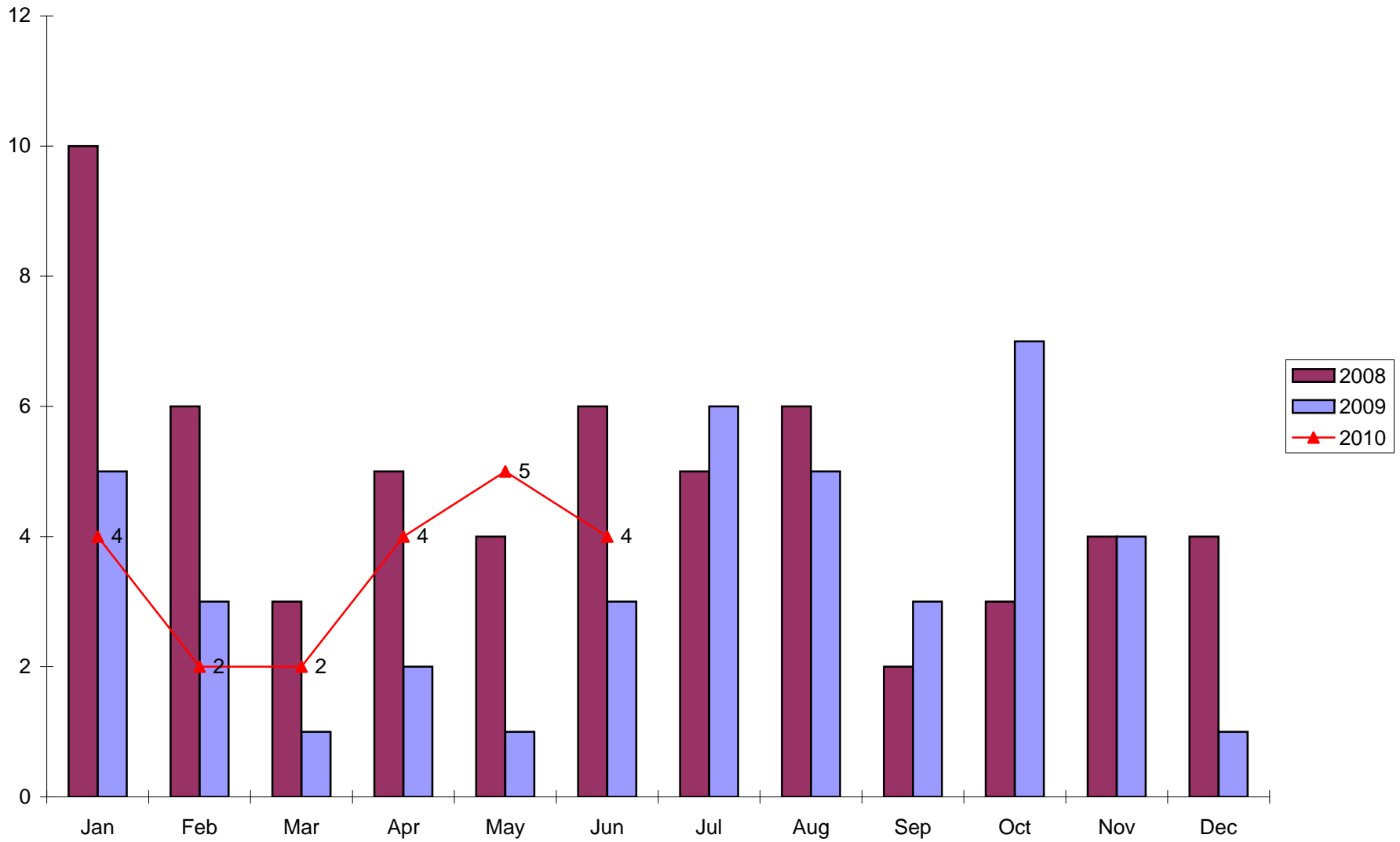
Long Term Care Occupancy



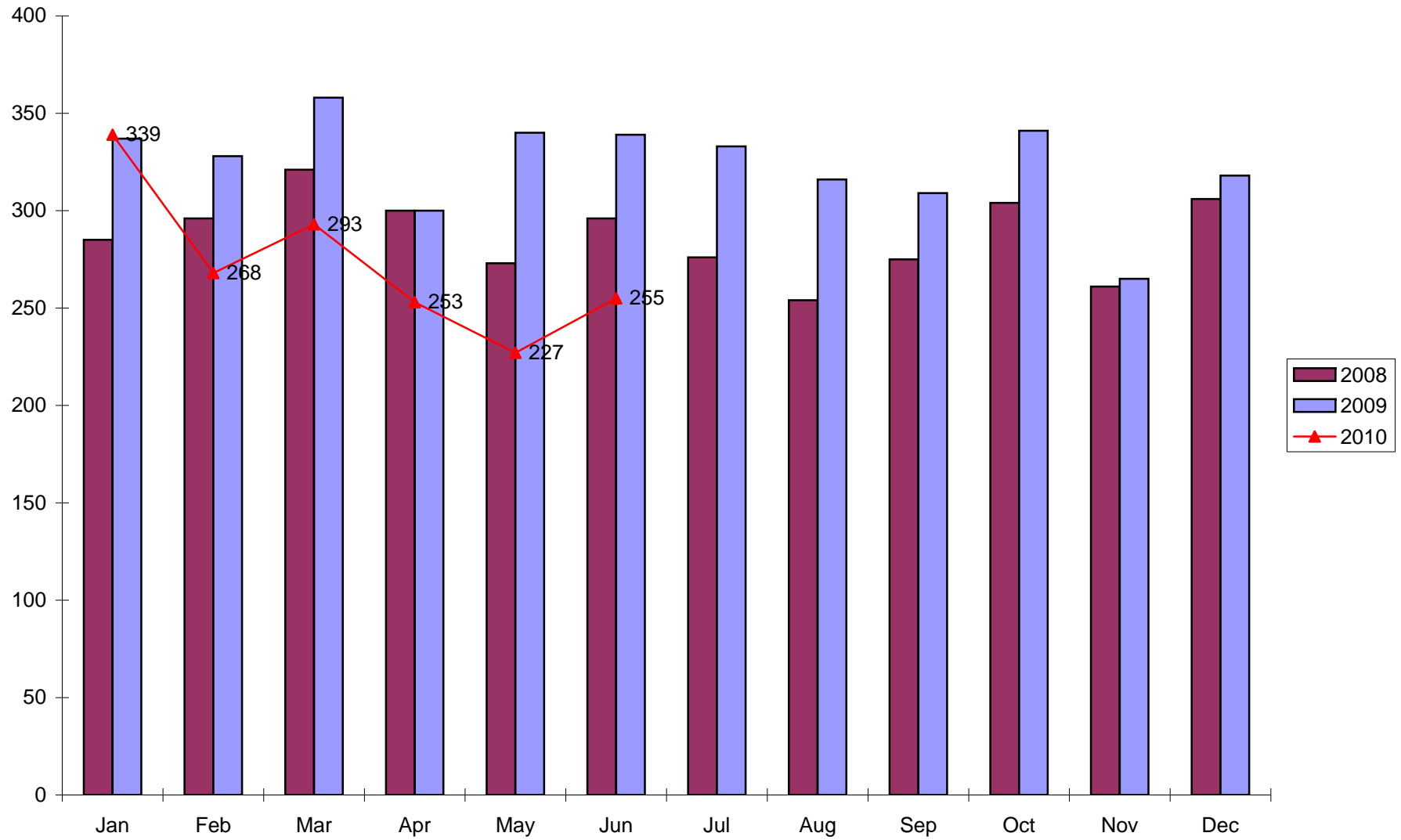
Physical Therapy Treatments



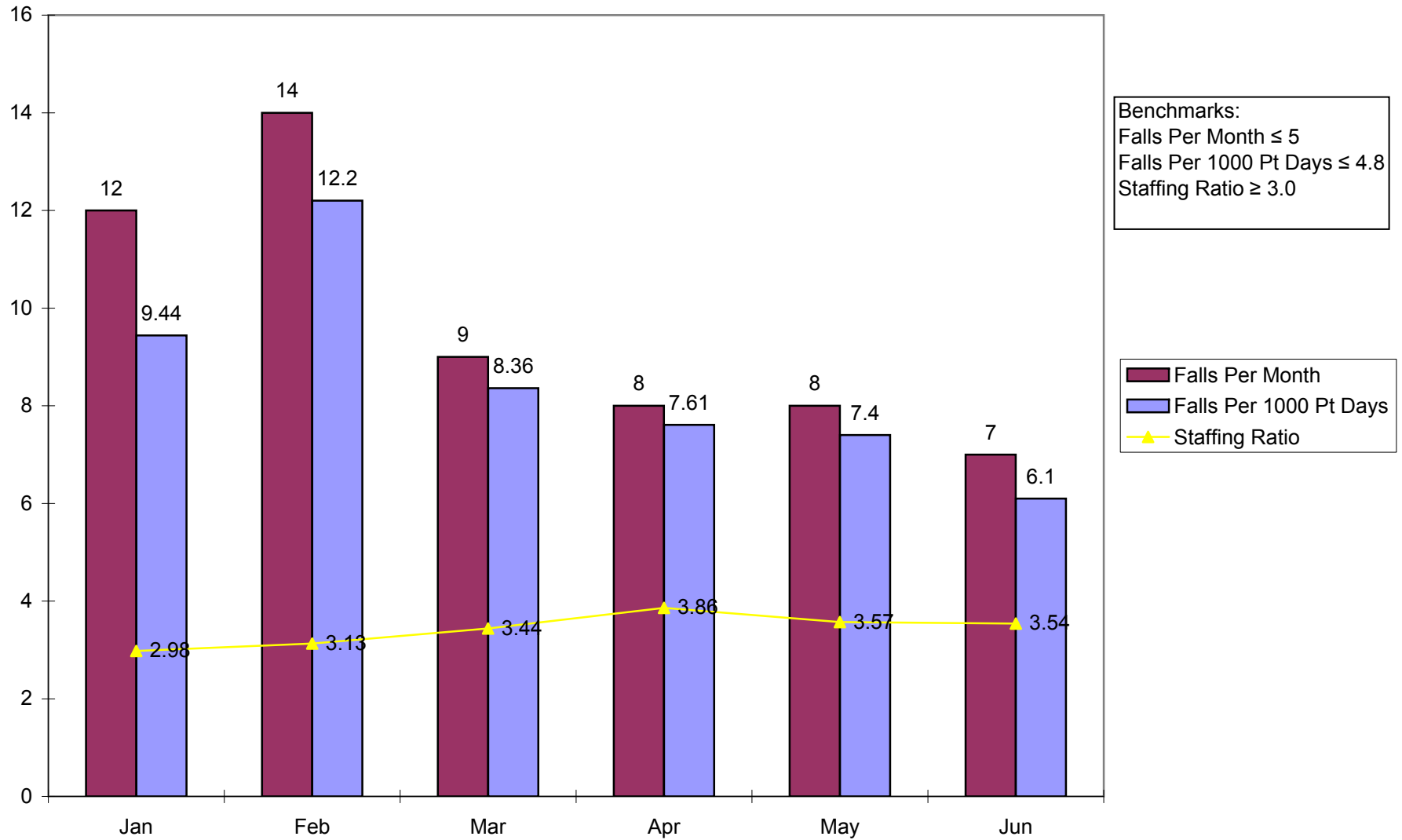
Observation Admissions



Outpatient Visits

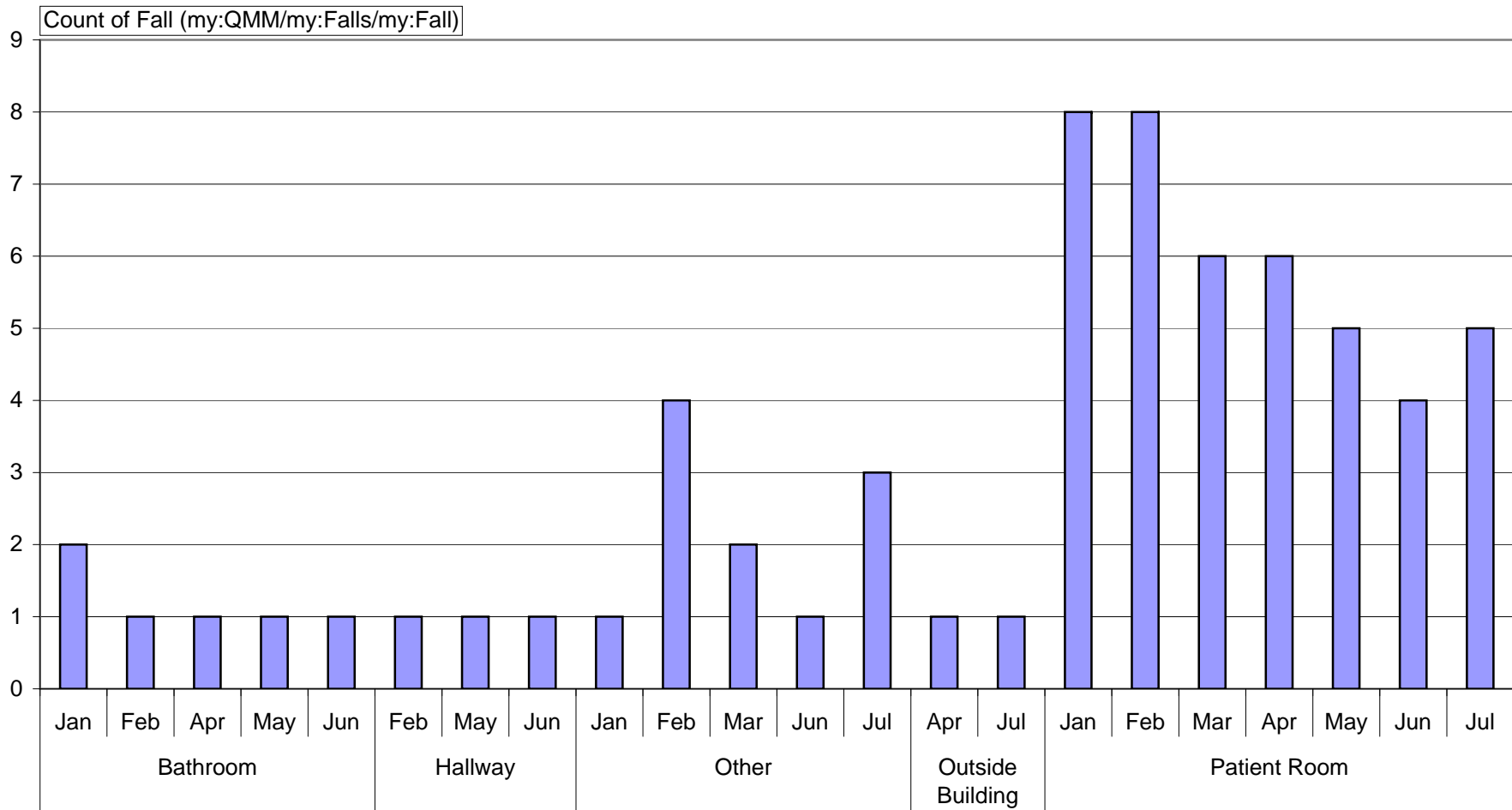


2010 Fall Data



Year (my:QMM/my:Year) (All)

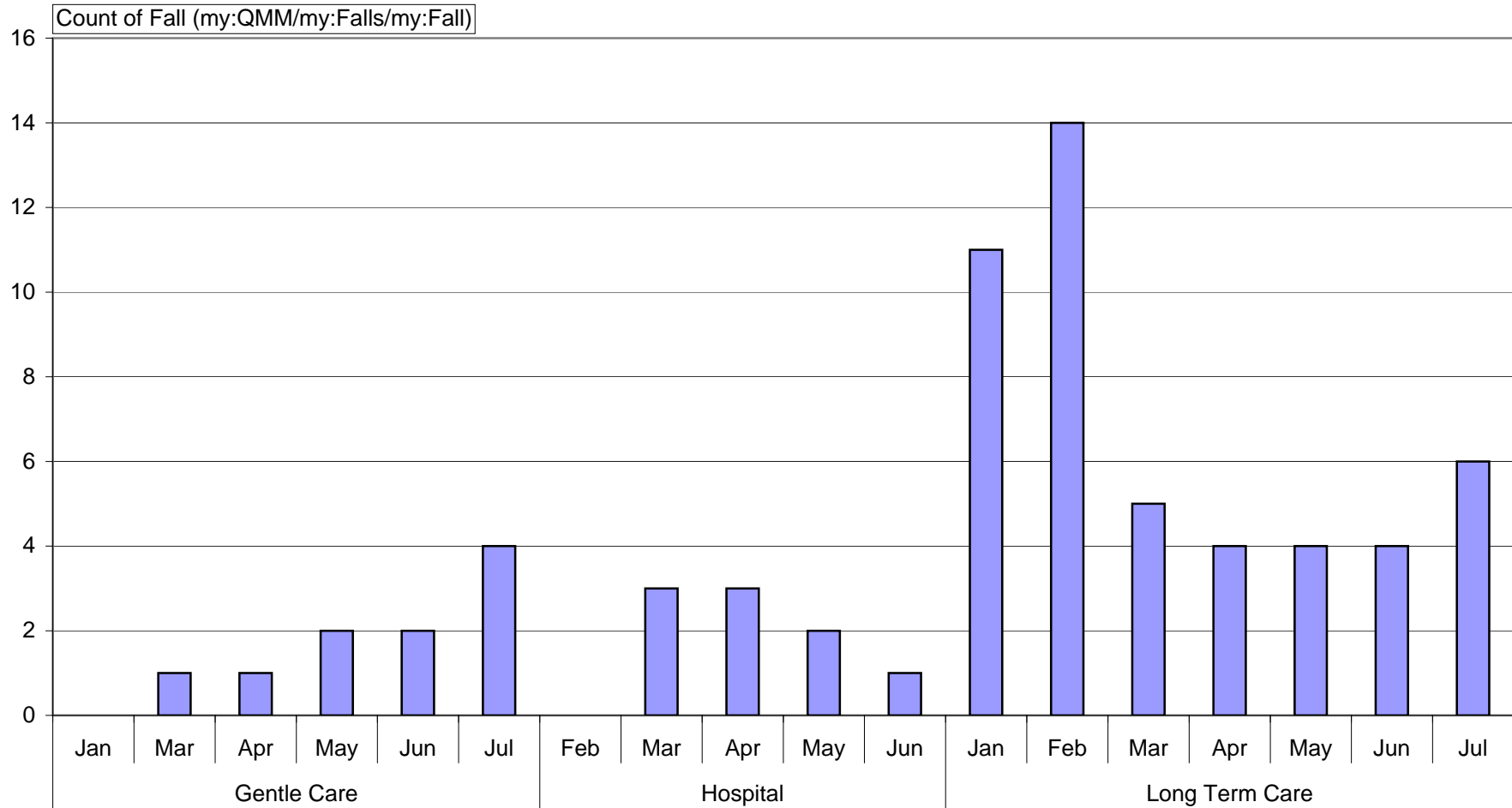
2010 Total Falls by Location & Month



FallLocation (my:QMM/my:Falls/my:FallLocation) | Month (my:QMM/my:Month)

Year (my:QMM/my:Year) (All)

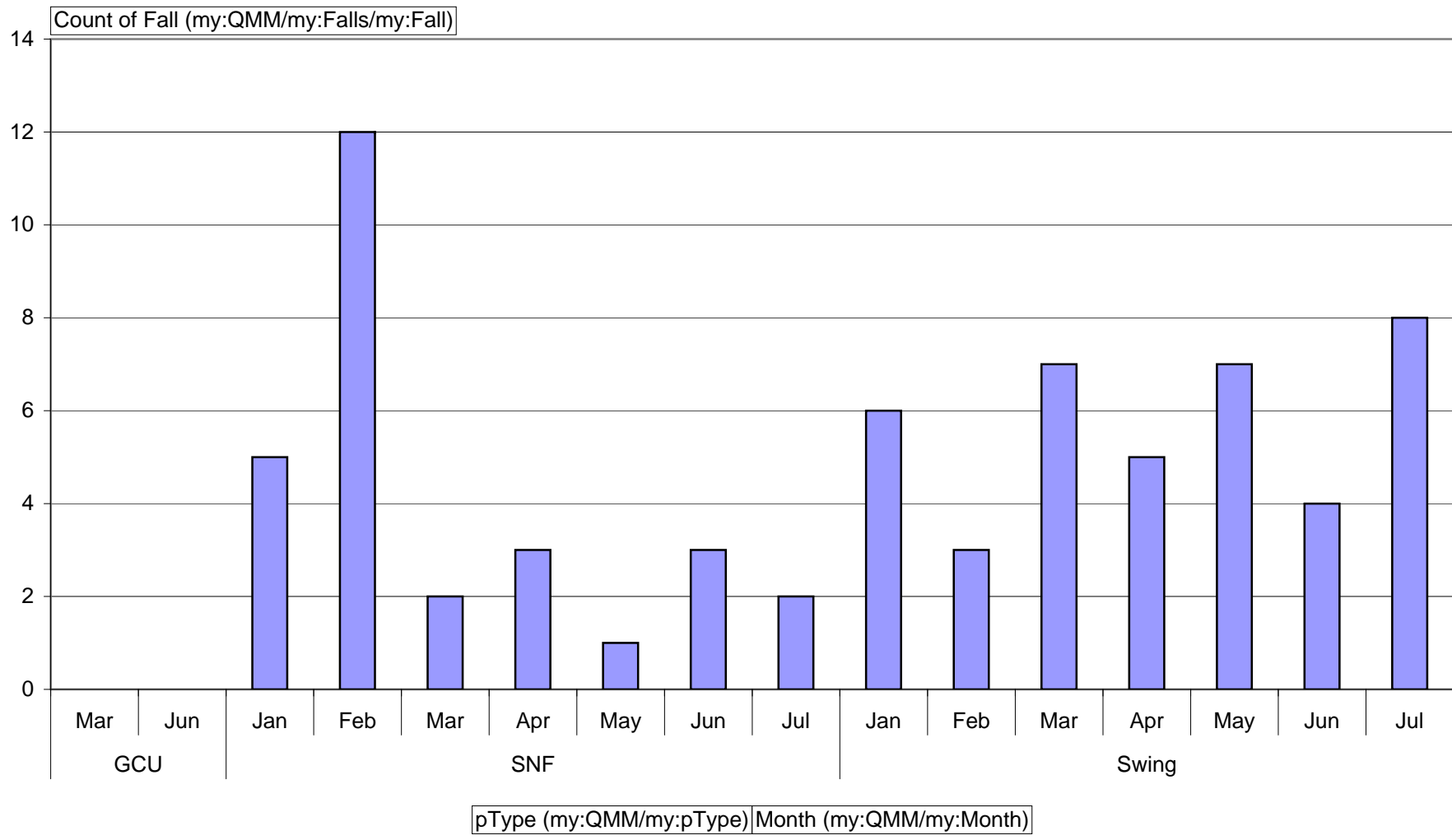
2010 Total Falls by Location & Month



Location (my:QMM/my:Location) | Month (my:QMM/my:Month)

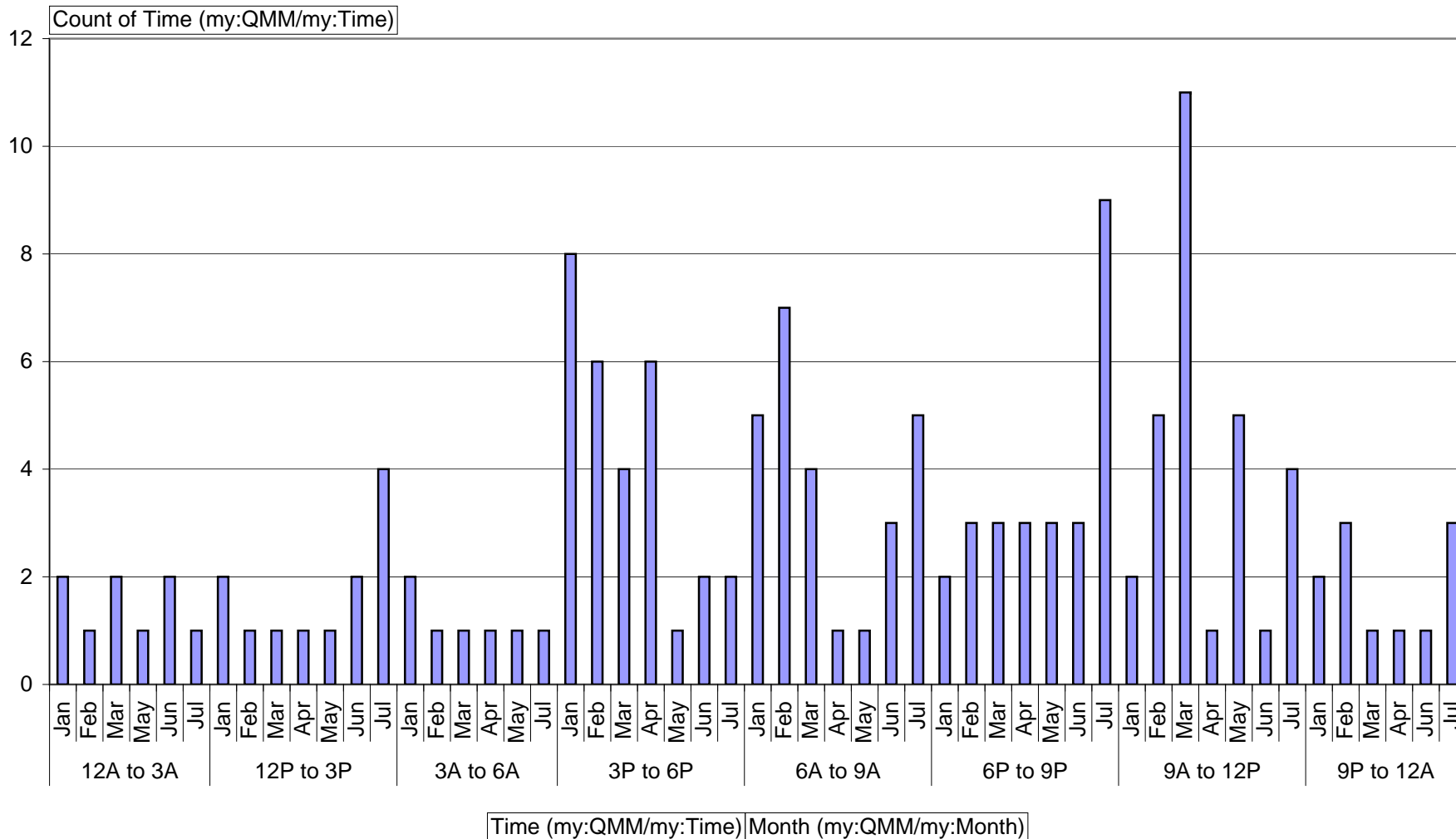
Year (my:QMM/my:Year) (All)

2010 Total Falls by Patient Type & Month



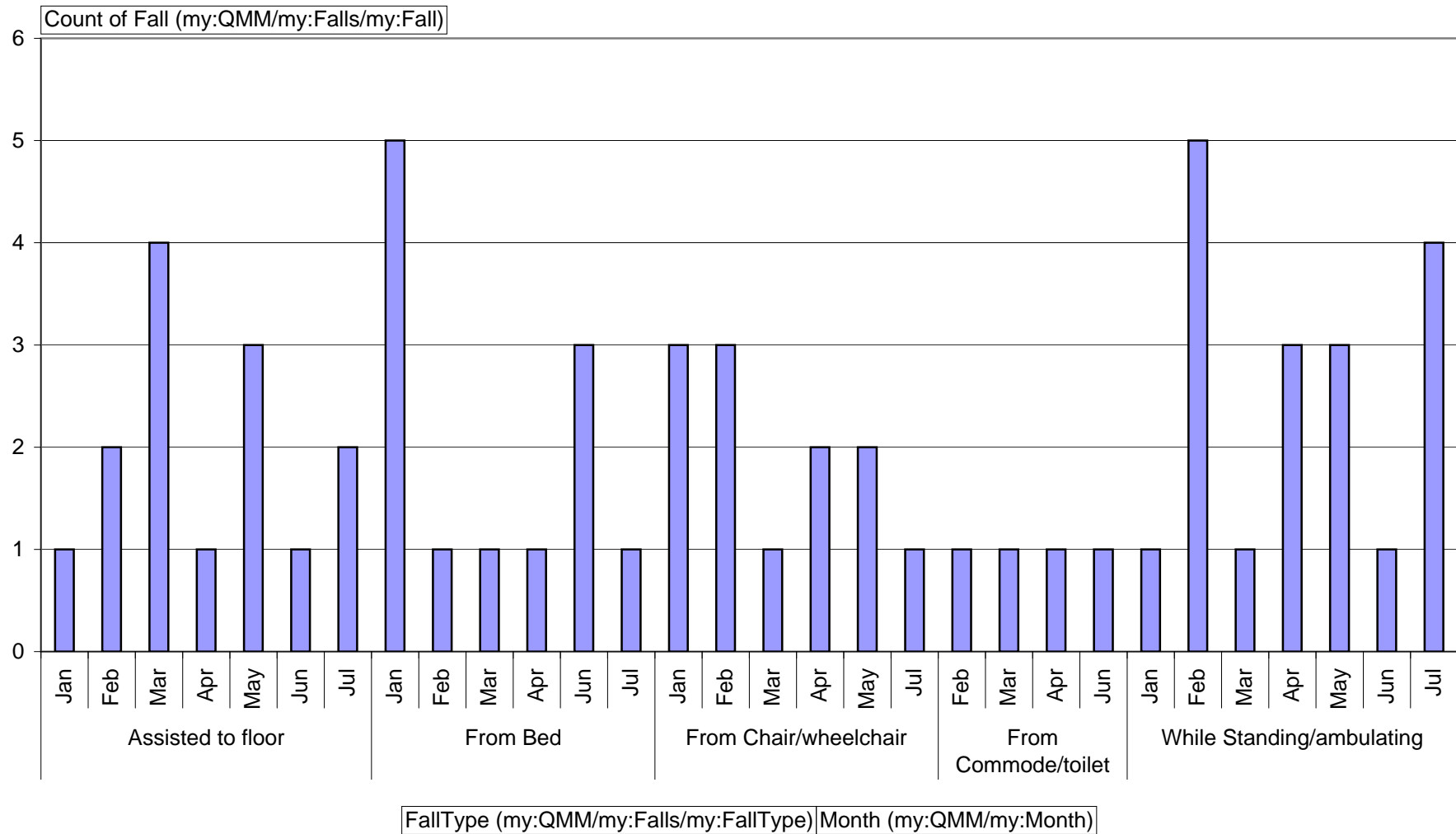
Year (my:QMM/my:Year) (All)

2010 Total Falls by Time & Month



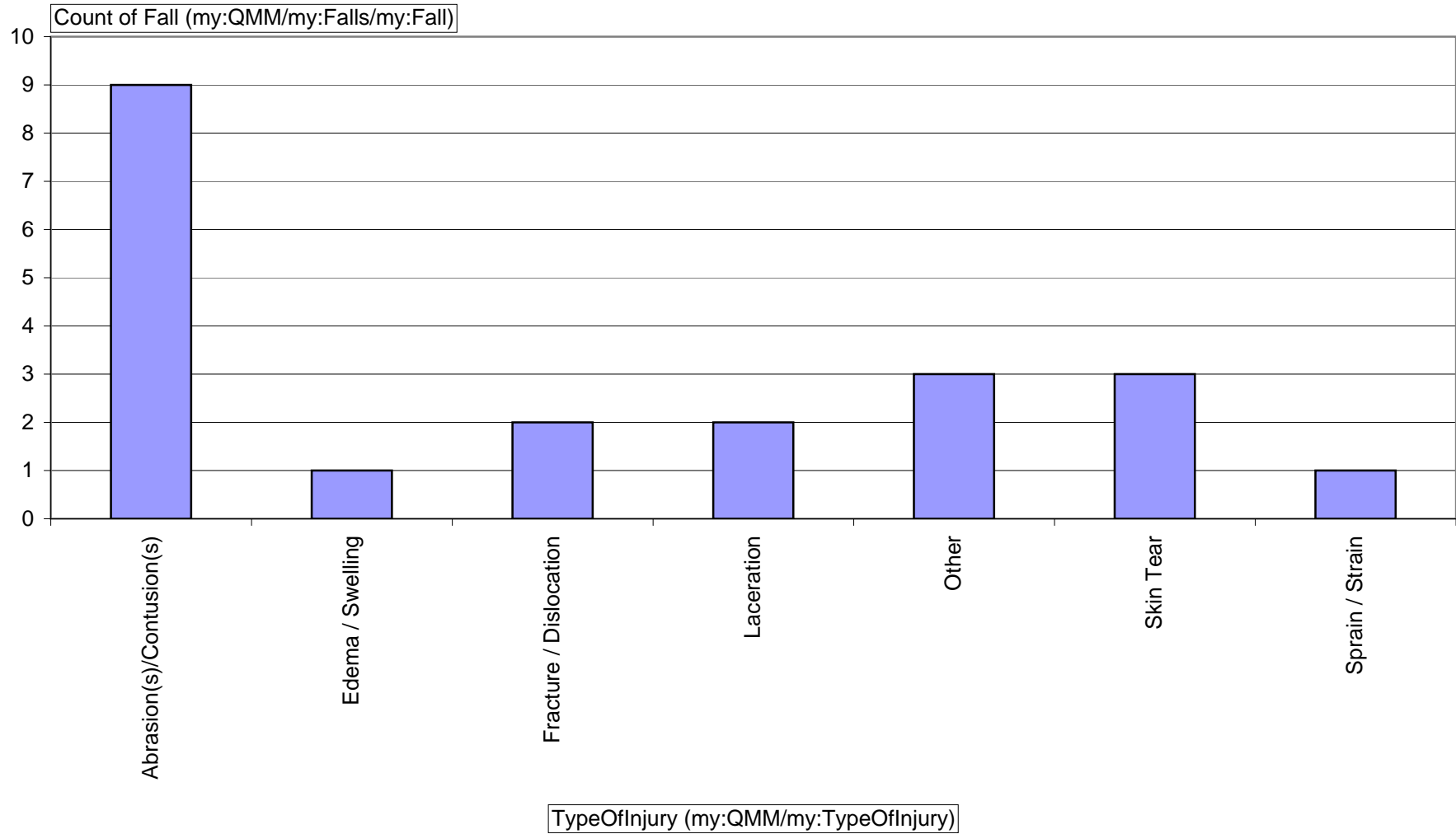
Year (my:QMM/my:Year) (All)

2010 Total Falls by Type & Month



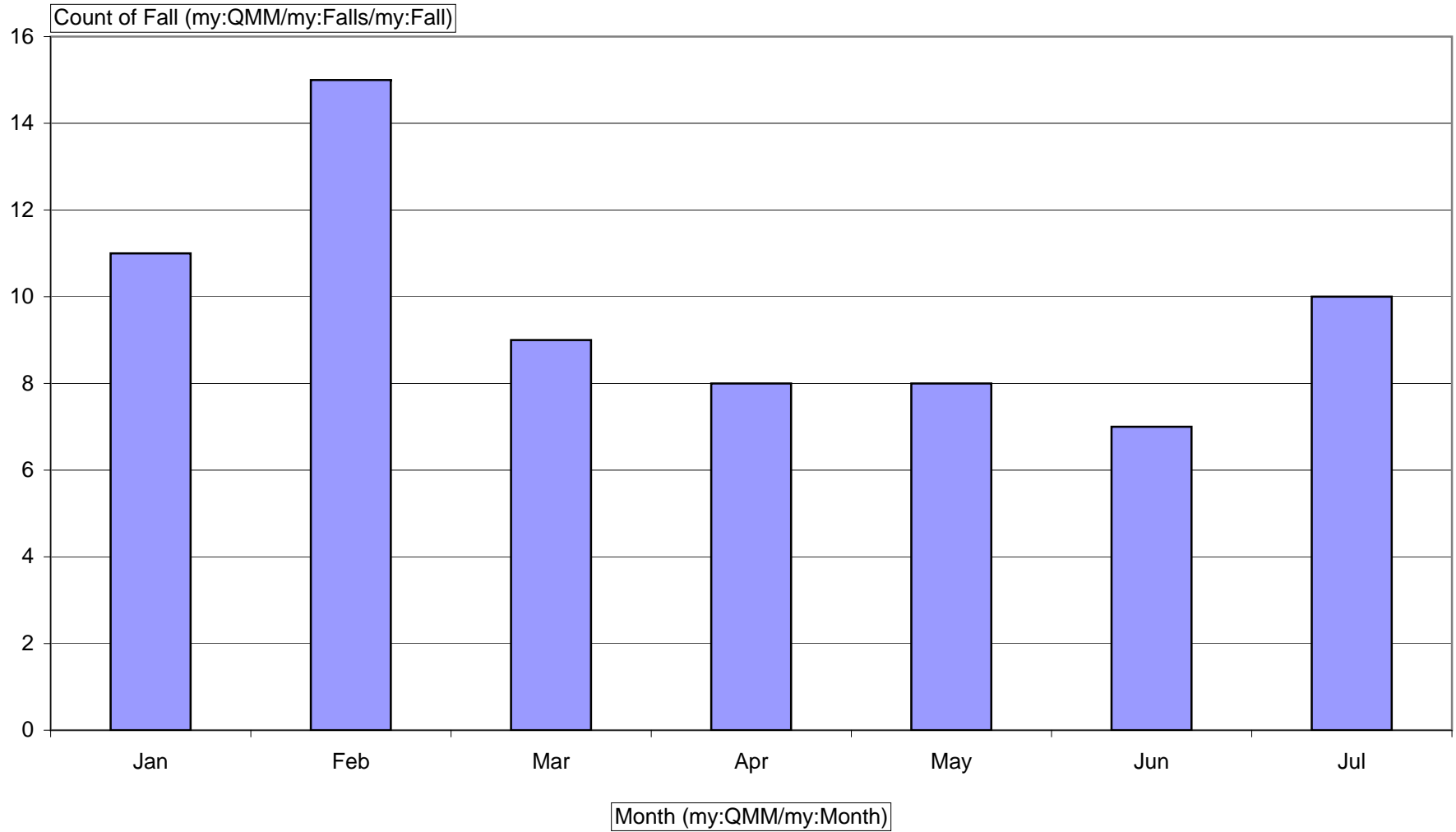
Year (my:QMM/my:Year) (All)

2010 Total Falls With Injury by Type of Injury



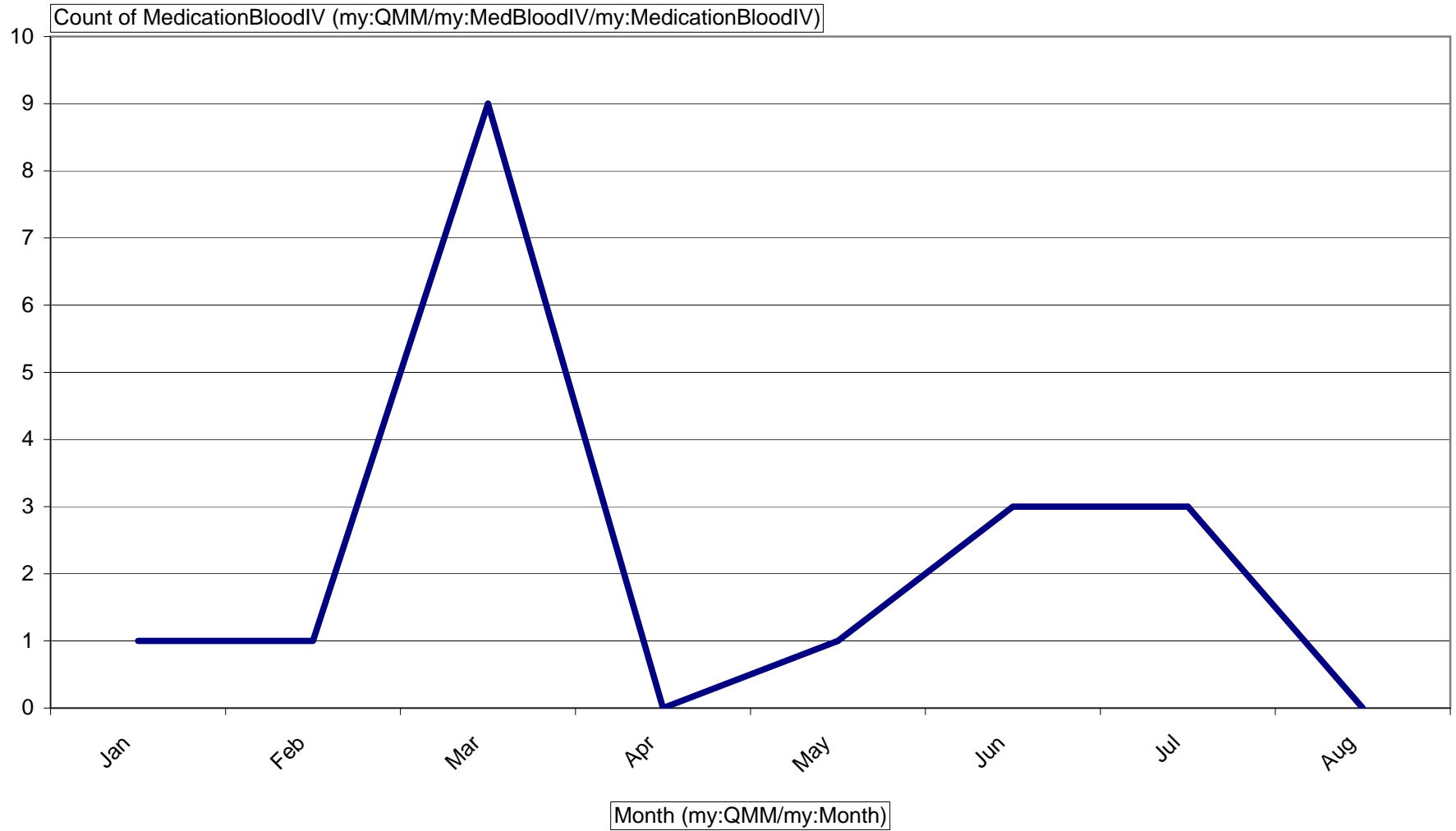
Year (my:QMM/my:Year) (All)

2010 Total Falls by Month



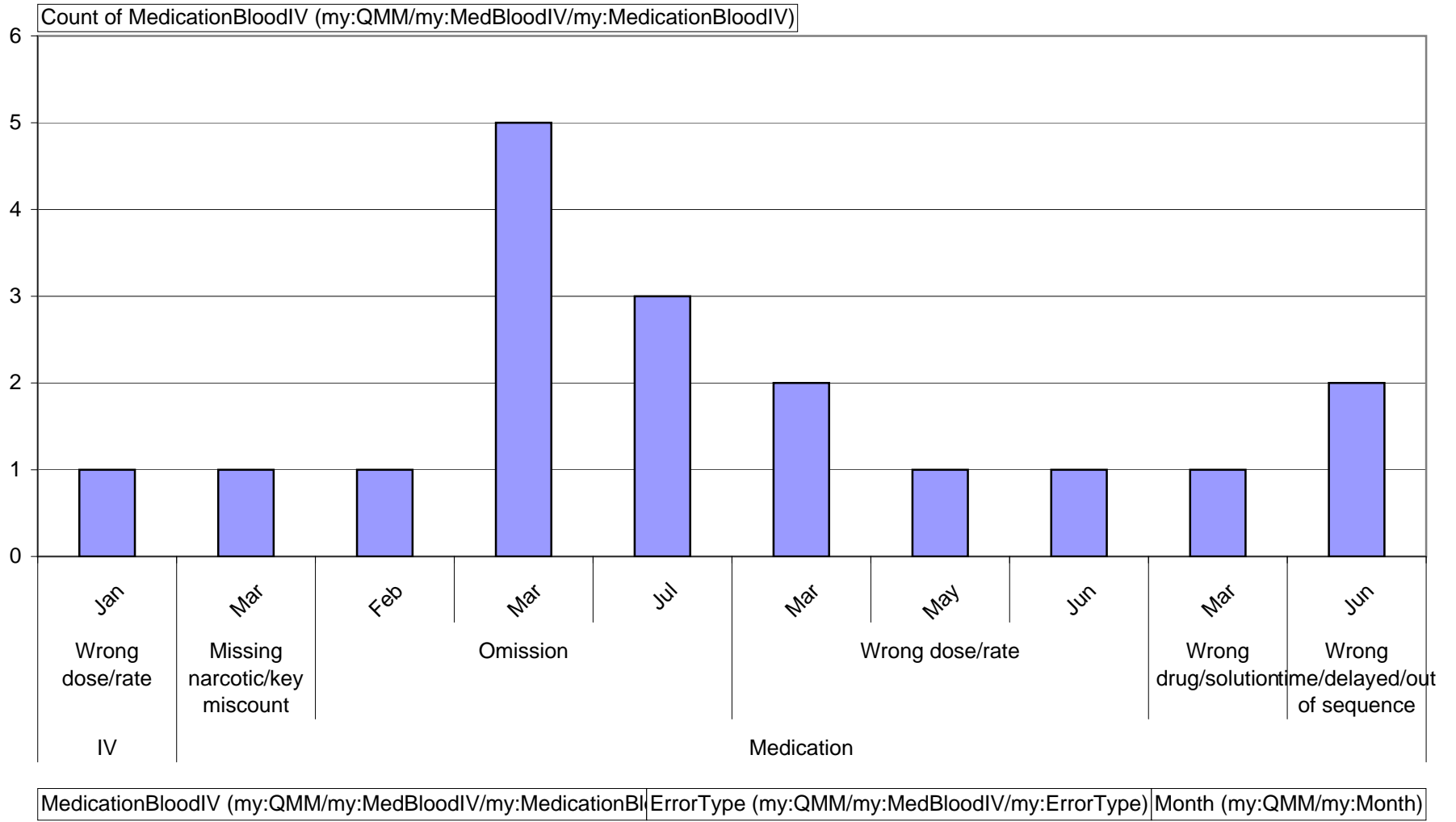
Year (my:QMM/my:Year) (All)

2010 Total Medication Errors by Month



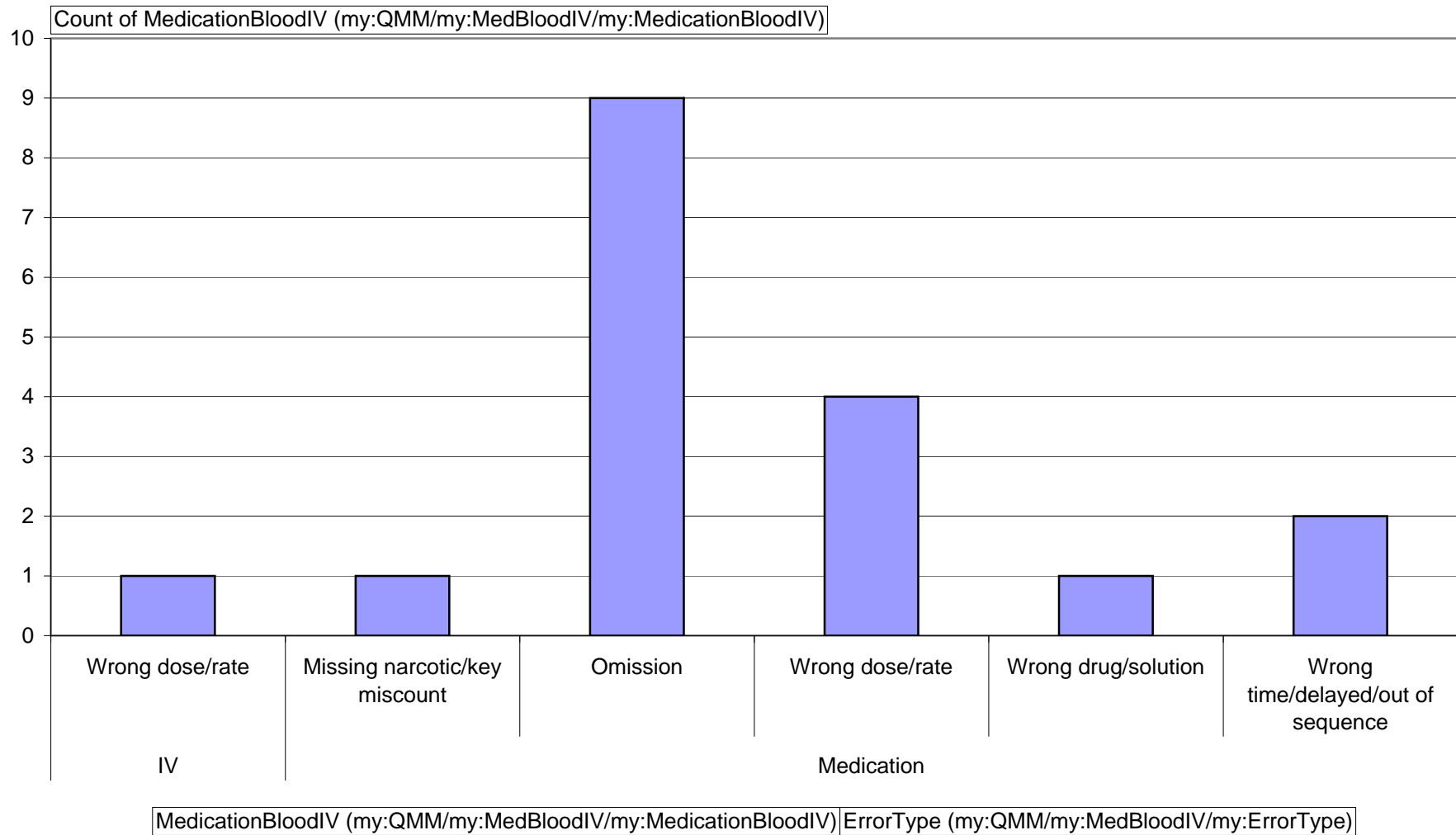
Year (my:QMM/my:Year) (All)

2010 Total Medication Errors by Type & Month



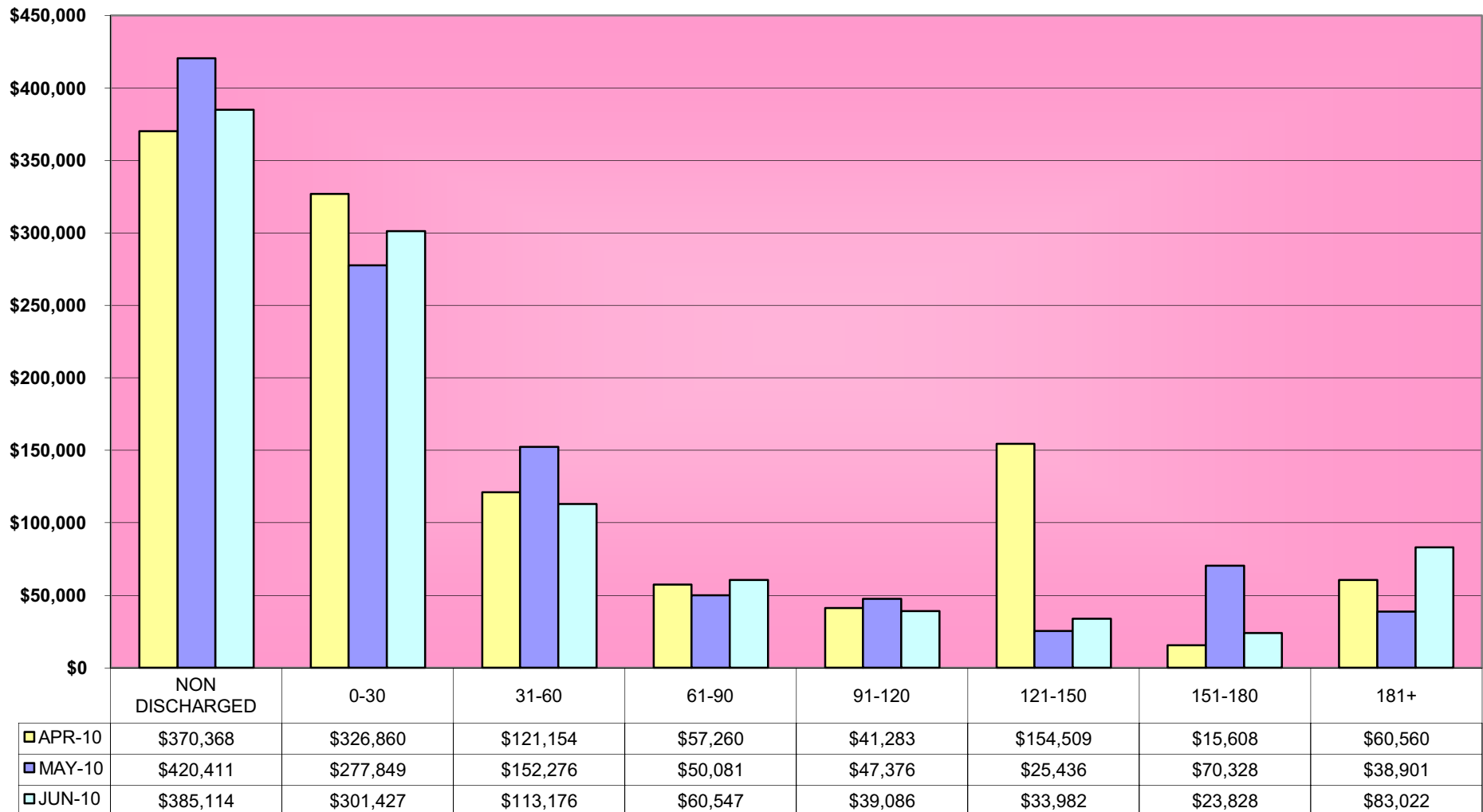
Year (my:QMM/my:Year) (All)

2010 Total Medication Errors by Type



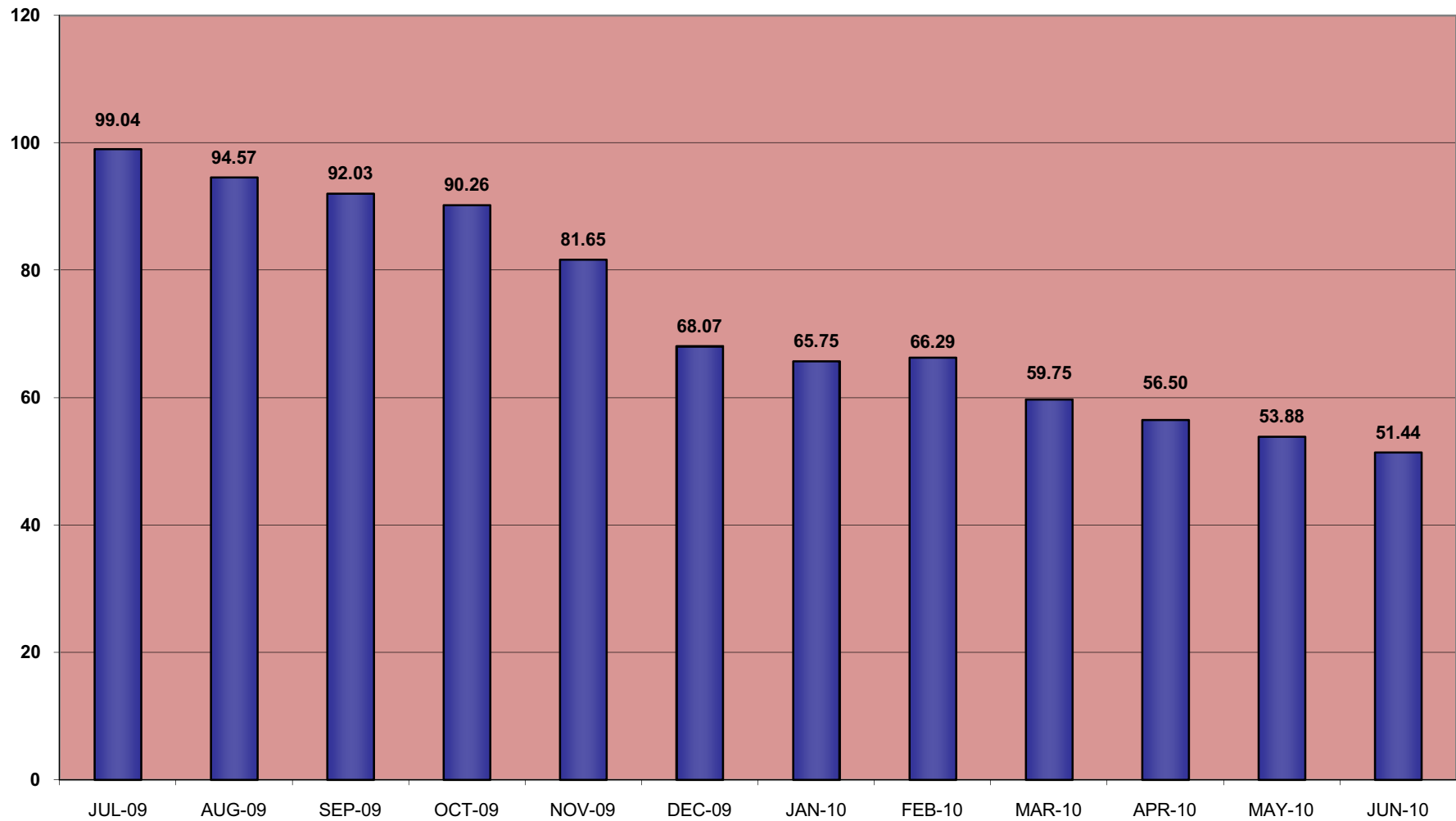
GARFIELD COUNTY HOSPITAL DISTRICT

Month-End Finance Report
AR Dollars Three-Month Aging



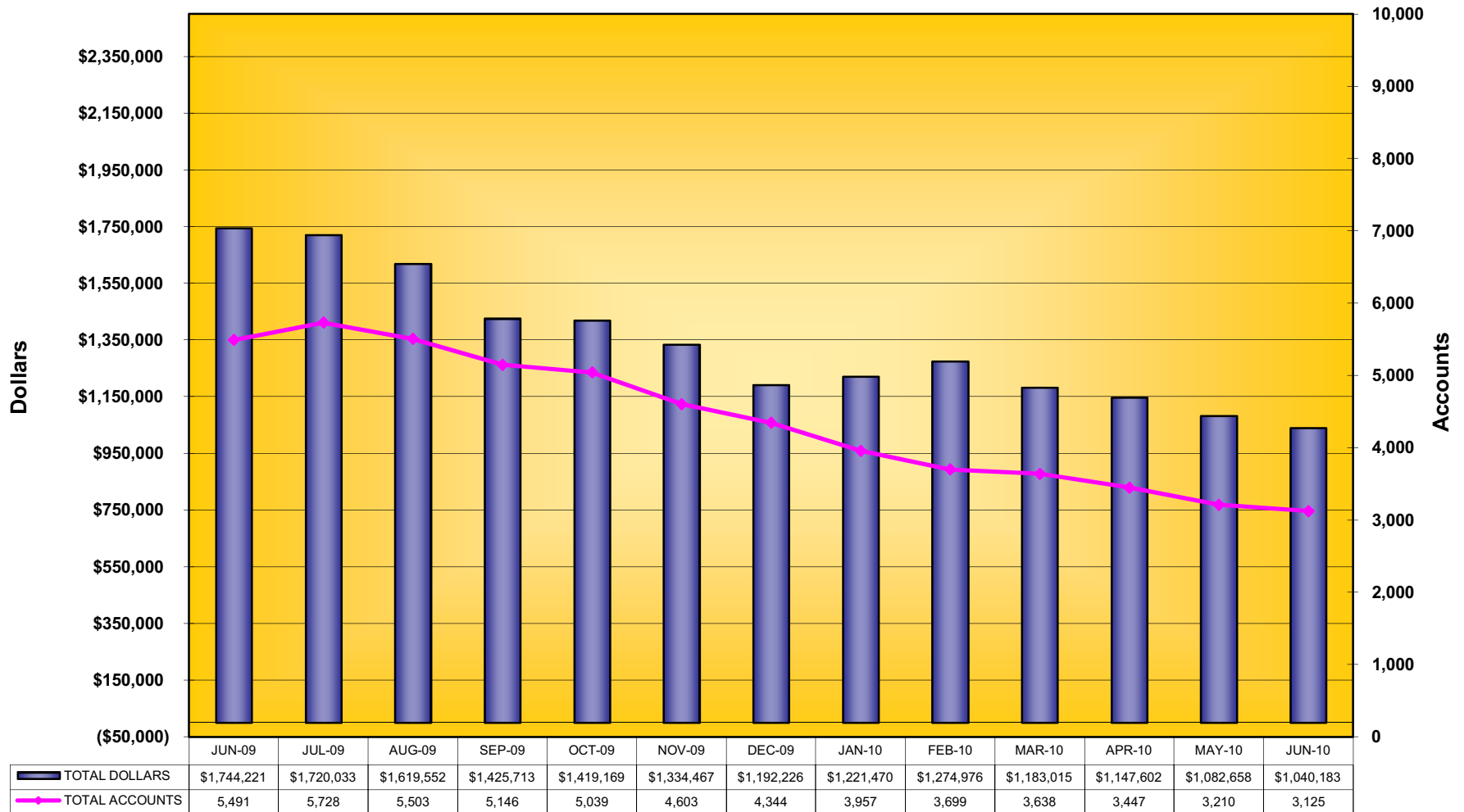
GARFIELD COUNTY HOSPITAL DISTRICT

Month-End Finance Report
Days in Accounts Receivable

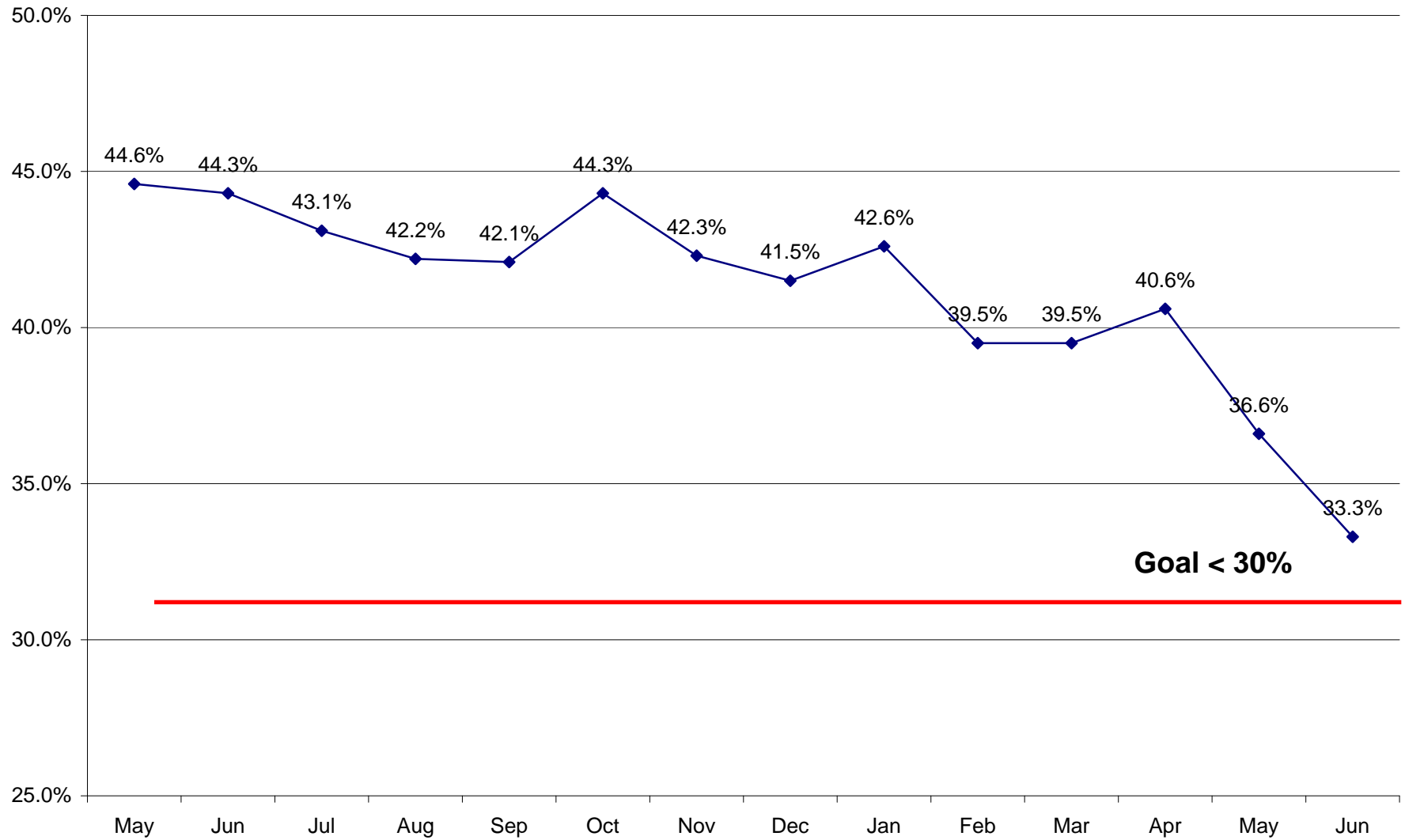


GARFIELD COUNTY HOSPITAL DISTRICT

Month-End Finance Report Accounts Receivable



12 Mo Ave Employee Turnover



Goal < 30%

12 Mo Ave Work-related Incidents

